

# Relaxed ventilation with KWL® YOGA.



**Are your buildings fit for the future? Whether at school or in public buildings, at work or in leisure time – our new, decentralised ventilation units with heat recovery KWL Yoga make it easy to achieve the best indoor air quality.**

The compact design and simple installation without an air distribution system also make KWL Yoga perfect for renovation projects. Three available unit sizes for flow rates up to 400, 700 and 1000 m<sup>3</sup>/h and various equipment versions are only some of the highlights of KWL Yoga.

# All advantages at a glance:



- Practical: Simple **maintenance** through freely accessible inspection flaps on the underside of the unit.
- Flexible: Three available unit sizes for flow rates up to **400, 700 and 1000 m<sup>3</sup>/h**.
- Diverse: Ideal for use in **schools, offices and public facilities**.
- Guaranteed: **Best air quality** with low CO<sub>2</sub> concentration promotes receptiveness and performance.
- Customised: 12 different **equipment options**.
- **Note:** Types "ET" are equipped with highly efficient **enthalpy heat exchanger**.

#### ■ KWL Yoga Style

Compact wall units from 400 to 1000 m<sup>3</sup>/h.

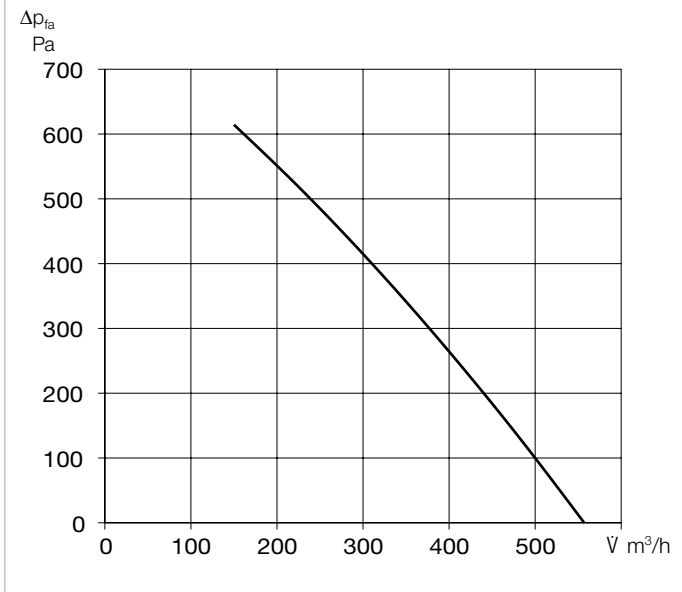


60ff

KWL YOGA Style 400



Performance curve KWL YOGA Style 400



Decentralised compact ventilation units with heat recovery for the supply and extract ventilation of individual rooms, such as classrooms, recreation rooms, offices, commercial units, medical practices and many more. Equipped with highly-efficient aluminium heat exchangers and energy-saving EC motors. Automatic shutters for intake and exhaust prevent cold draughts when the fans are deactivated. The flow-optimised supply air grille allows draught-free ventilation, even in large rooms, through the optimal use of the Coanda effect. Includes a touch control element for easy operation and configuration of unit functions.

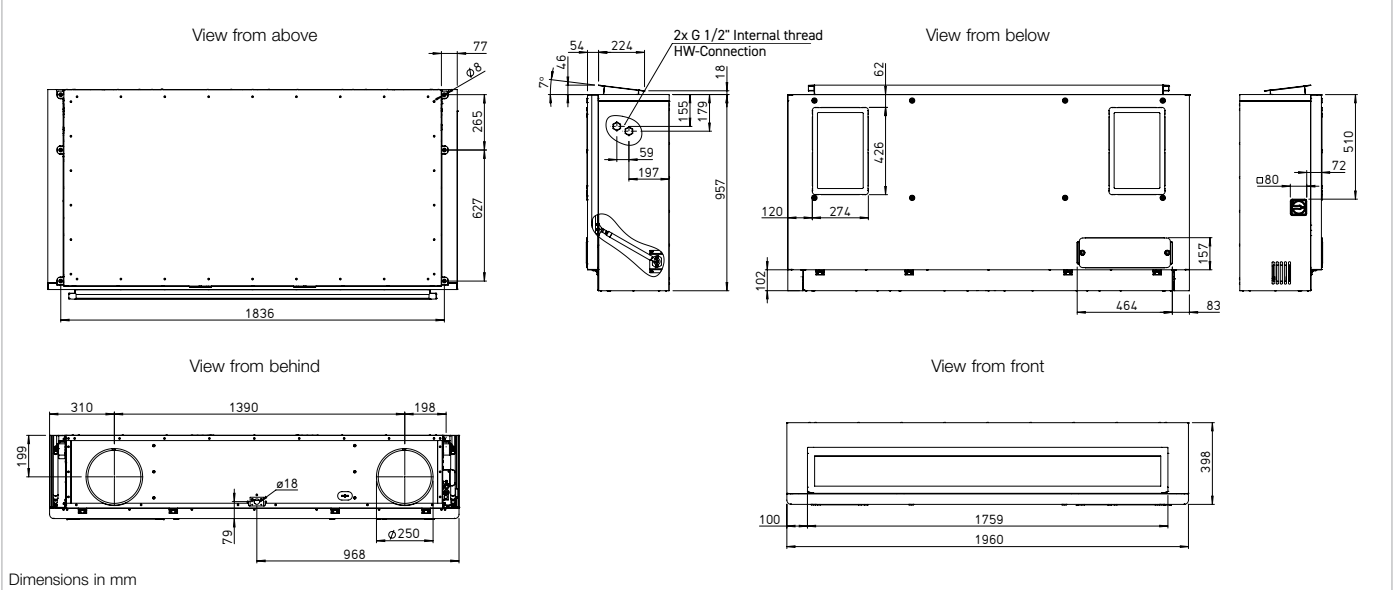
- Casing**  
Made of galvanised steel sheet, the casing parts are painted white/powder-coated. The double-walled unit casing is equipped with 40 mm thermal and sound insulation on all sides. Easy installation and maintenance due to large inspection panel.
- Installation**  
Ceiling installation is carried out using the vibration-damping fastening elements included in the scope of delivery.
- Heat exchanger**  
Large aluminium cross counterflow heat exchanger with up to 90 % heat recovery efficiency. Dismantling is possible in a few steps. Types "ET" are equipped with highly efficient enthalpy heat exchanger for additional humidity recovery of up to 50%.

- Fans**  
Two low-noise, high-performance EC fans with backward curved impellers for maximum energy efficiency.
- Sensor system**  
Integrated CO<sub>2</sub> sensor system. Alternatively, this can be replaced by an external sensor (VOC, CO<sub>2</sub> or humidity) positioned in the room. KWL Yoga can also be controlled with a motion sensor (combination not possible!) instead of the sensors.
- Air flow**  
Supply air on front side, two extract air openings on the underside of the unit. Intake and exhaust air connectors are equipped with spring-loaded shutters.

- Condensate connection**  
Condensate connection horizontal (wall side), optionally via ball siphon in surface-mounted or flush-mounted design or via condensate pump.
- Air filter, VDI-certified**  
Clean intake air flow via ISO ePM<sub>1</sub> 60 % filter (F7). Two filters for extract air: ISO Coarse 60 % (G4); optionally available: ISO ePM<sub>10</sub> 60 % (M5).
- Summer operation**  
Equipped with automatic bypass function (bypassing the heat exchanger to use the cool night air for controlling the room temperature) as standard.

	Without electrical preheater/ without electrical after-heater	Without electrical preheater/ with electrical after-heater	Without electrical preheater/ with warm water after-heater	With electrical preheater/ without after-heater	With electrical preheater/ with electrical after-heater
	<b>KWL YOGA Style 400</b> Ref. no. 40008	<b>KWL YOGA Style 400 EN</b> Ref. no. 40010	<b>KWL YOGA Style 400 WW</b> Ref. no. 40012	<b>KWL YOGA Style 400 EV</b> Ref. no. 40014	<b>KWL YOGA Style 400 EV/EN</b> Ref. no. 40016
	<b>KWL YOGA Style 400 ET</b> Ref. no. 40667	<b>KWL YOGA Style 400 EN ET</b> Ref. no. 40668	<b>KWL YOGA Style 400 WW ET</b> Ref. no. 40669	<b>KWL YOGA Style 400 EV ET</b> Ref. no. 40670	<b>KWL YOGA Style 400 EV/EN ET</b> Ref. no. 40671
Intake/exhaust air connector diameter	250	250	250	250	250
Air volume V m³/h (Min. - Max.)	150 - 560	150 - 560	150 - 560	150 - 560	150 - 560
Radiation L <sub>p</sub> , dB(A) in 1 m / 3 m (at 0 Pa)					
- 150 m³/h	26 / 20	26 / 20	26 / 20	26 / 20	26 / 20
- 200 m³/h	28 / 22	28 / 22	28 / 22	28 / 22	28 / 22
- 300 m³/h	31 / 25	31 / 25	31 / 25	31 / 25	31 / 25
- 560 m³/h	38 / 32	38 / 32	38 / 32	38 / 32	38 / 32
Maximum power consumption total (incl. control) W	350	1850	350	1850	3350
Rated current total (incl. control) A	2.45	9.0	2.45	9.0	15.51
Voltage / frequency	1~, 230 V, 50 Hz	1~, 230 V, 50 Hz	1~, 230 V, 50 Hz	1~, 230 V, 50 Hz	1~, 230 V, 50 Hz
Protection category IP	20	20	20	20	20
Temperature operating range °C	-10 to+40	-10 to+40	-10 to+40	-20 to+40	-20 to+40
Installation temperature °C	+5 to+40	+5 to+40	+5 to+40	+5 to+40	+5 to+40
Weight approx. kg	167	169	169	169	171
Wiring diagram no.	1500	1500	1500	1500	1500

**Dimensions KWL YOGA Style 400**



**Heat exchanger frost protection**

The standard frost monitoring automatically regulates the supply air flow and the built-in electrical preheater, depending on the selected equipment.

**After-heater**

Unit variants with integrated post-heating (warm water or electrical after-heater) ensure the comfortable and energy-efficient post-heating of supply air. The target supply air temperature is set on the control element. The use of hydraulic unit type WHSH HE 24 V (0-10V), (accessories) is recommended for controlling the warm water heating element.

**Power control**

The included comfort control element with touch functionality and easy menu navigation provide the following functions:

- Demand-oriented ventilation, optionally with CO<sub>2</sub>, VOC, or humidity sensor (1 sensor can be connected).
- Initial commissioning (automatic determination of system characteristic curve).
- Fire alarm contact connection.
- Weekly or daily programme.
- Automatic bypass (summer operation: use of cool night air).
- Pressure monitoring of filter contamination.
- Displays required filter replacement.
- 5 password-protected function levels can be configured.
- Control via central building control system possible (ModBus RTU and ModBus TCP, BACnet)
- Including control line cable (10 m)

**Electrical connection**

After removing the left side panel, the connection box is easily accessible on the outside of the casing. The isolator/main switch is located on the outside of the unit for easy maintenance. It can be locked using a padlock to prevent unauthorised access.

**Sensors**

**Infrared motion sensor** for detecting the presence of people in the room.

**BWM** Ref. no. 08323

**CO<sub>2</sub> sensor** for measuring the CO<sub>2</sub> concentration.

**AIR1/KWL-VOC 0-10V** No. 20250

**VOC sensor** for measuring the mixed gas concentration (VOC).

**AIR1/KWL-CO2 0-10V** No. 20251

**Humidity-temperature sensor** for measuring the relative air humidity.

**AIR1/KWL-FTF 0-10V** No. 20252

**Control line cable**

**KWL-SL eC 5m** Ref. no. 40179

**KWL-SL eC 10m** Ref. no. 40180

Control line cables in 5 or 10 meters for sensors.

**Installation accessories**

**Flush-mounted/wall-mounted siphon**

**KWL-KS WE** Ref. no. 40064

**Ball-tube siphon**

**KWL-KS** Ref. no. 40065

**Condensate submersible pump**

**KWL-KP-I** Ref. no. 40472

**Hydraulic unit**

**WHSH HE 24V (0-10V)** No. 08318

**Facade grille, circular**

**FGR 250** Ref. no. 40181

**Filter, VDI-certified**

**Spare air filter (extract air)\***

ISO Coarse 60% (G4). Unit = 1 pc.  
**ELF-KWL YOGA 400/VDI/Coarse 60%**  
Ref. no. 40687

**Spare air filter (extract air)\***

ISO ePM<sub>10</sub> 60% (M5). Unit = 1 pc.  
**ELF-KWL YOGA 400/VDI/ePM10 60%**  
Ref. no. 40690

**Spare air filter (intake air)**

ISO ePM<sub>1</sub> 60% (F7). Unit = 1 pc.  
**ELF-KWL YOGA 400/VDI/ePM1 60%**  
Ref. no. 40693

\*2 extract air filters are required per unit.

**Attention:** For spare air filters of older unit generations (orders before March 2023): Please contact us at [export@heliosventilatoren.de](mailto:export@heliosventilatoren.de)

With electrical preheater/ with warm water after-heater
<b>KWL YOGA Style 400 EV/WW</b> Ref. no. 40018
<b>KWL YOGA Style 400 EV/WW ET</b> Ref. no. 40672
250
150 - 560
26 / 20
28 / 22
31 / 25
38 / 32
1850
9.0
1-, 230 V, 50 Hz
20
-20 to +40
+5 to +40
171
1500

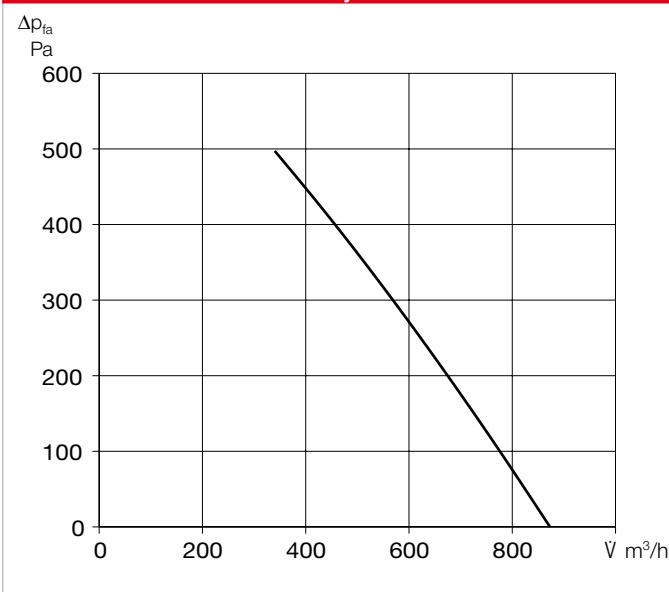
**Important note**

Further information on accessories can be found on page 66.

KWL YOGA Style 700



Performance curve KWL YOGA Style 700



Decentralised compact ventilation units with heat recovery for the supply and extract ventilation of individual rooms, such as classrooms, recreation rooms, offices, commercial units, medical practices and many more. Equipped with highly-efficient aluminium heat exchangers and energy-saving EC motors. Automatic shutters for intake and exhaust prevent cold draughts when the fans are deactivated. The flow-optimised supply air grille allows draught-free ventilation, even in large rooms, through the optimal use of the Coanda effect. Includes a touch control element for easy operation and configuration of unit functions.

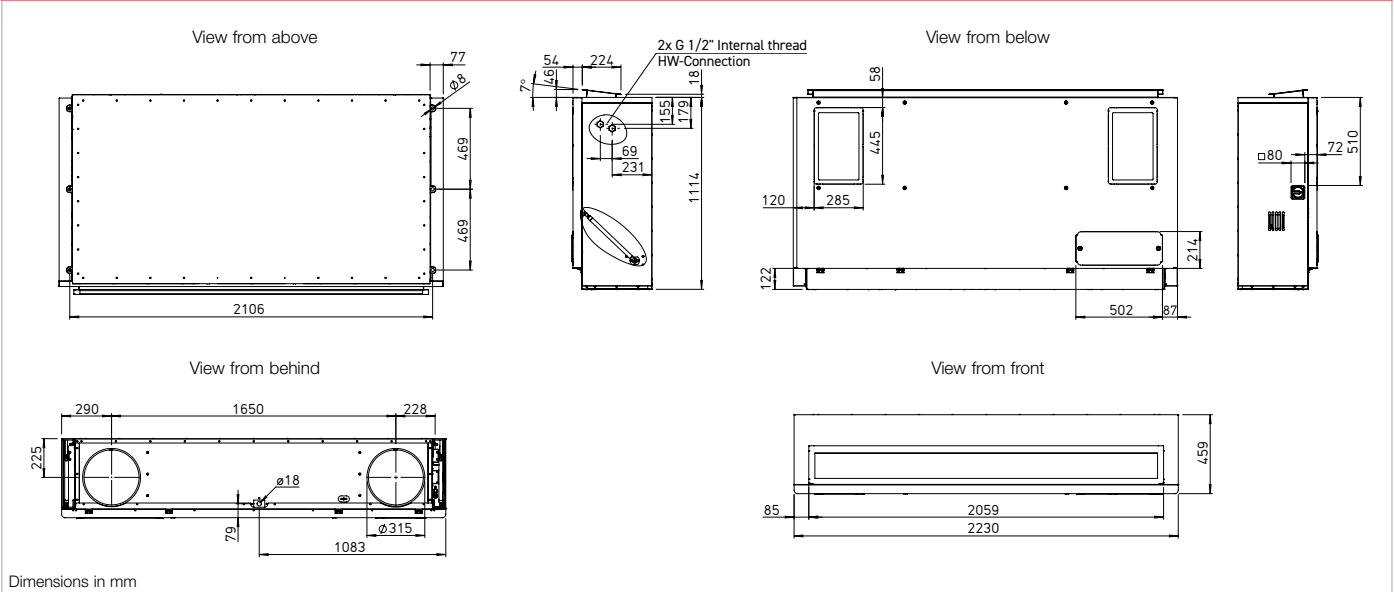
- Casing**  
Made of galvanised steel sheet, the casing parts are painted white/ powder-coated. The double-walled unit casing is equipped with 40 mm thermal and sound insulation on all sides. Easy installation and maintenance due to large inspection panel.
- Installation**  
Ceiling installation is carried out using the vibration-damping fastening elements included in the scope of delivery.
- Heat exchanger**  
Large aluminium cross counterflow heat exchanger with up to 90 % heat recovery efficiency. Dismantling is possible in a few steps. Types "ET" are equipped with highly efficient enthalpy heat exchanger for additional humidity recovery of up to 50%.

- Fans**  
Two low-noise, high-performance EC fans with backward curved impellers for maximum energy efficiency.
- Sensor system**  
Integrated CO<sub>2</sub> sensor system. Alternatively, this can be replaced by an external sensor (VOC, CO<sub>2</sub> or humidity) positioned in the room. KWL Yoga can also be controlled with a motion sensor (combination not possible!) instead of the sensors.
- Air flow**  
Supply air on front side, two extract air openings on the underside of the unit. Intake and exhaust air connectors are equipped with spring-loaded shutters.

- Condensate connection**  
Condensate connection horizontal (wall side), optionally via ball siphon in surface-mounted or flush-mounted design or via condensate pump.
- Air filter, VDI-certified**  
Clean intake air flow via ISO ePM<sub>1</sub> 60 % filter (F7). Two filters for extract air: ISO Coarse 60 % (G4); optionally available: ISO ePM<sub>10</sub> 60 % (M5).
- Summer operation**  
Equipped with automatic bypass function (bypassing the heat exchanger to use the cool night air for controlling the room temperature) as standard.

	Without electrical preheater/ without electrical after-heater	Without electrical preheater/ with electrical after-heater	Without electrical preheater/ with warm water after-heater	With electrical preheater/ without after-heater	With electrical preheater/ with electrical after-heater
	<b>KWL YOGA Style 700</b> Ref. no. 40020	<b>KWL YOGA Style 700 EN</b> Ref. no. 40022	<b>KWL YOGA Style 700 WW</b> Ref. no. 40024	<b>KWL YOGA Style 700 EV</b> Ref. no. 40026	<b>KWL YOGA Style 700 EV/EN</b> Ref. no. 40028
	<b>KWL YOGA Style 700 ET</b> Ref. no. 40673	<b>KWL YOGA Style 700 EN ET</b> Ref. no. 40674	<b>KWL YOGA Style 700 WW ET</b> Ref. no. 40675	<b>KWL YOGA Style 700 EV ET</b> Ref. no. 40676	<b>KWL YOGA Style 700 EV/EN ET</b> Ref. no. 40677
Intake/exhaust air connector diameter	315	315	315	315	315
Air volume V m³/h (Min. - Max.)	340 - 870	340 - 870	340 - 870	340 - 870	340 - 870
Radiation L <sub>p</sub> , dB(A) in 1 m / 3 m (at 0 Pa)					
- 340 m³/h	23 / 17	23 / 17	23 / 17	23 / 17	23 / 17
- 500 m³/h	28 / 22	28 / 22	28 / 22	28 / 22	28 / 22
- 700 m³/h	33 / 27	33 / 27	33 / 27	33 / 27	33 / 27
- 870 m³/h	35 / 29	35 / 29	35 / 29	35 / 29	35 / 29
Maximum power consumption total (incl. control) W	350	2600	350	2350	4600
Rated current total (incl. control) A	2.45	12.3	2.45	11.2	9.8
Voltage / frequency	1~, 230 V, 50 Hz	1~, 230 V, 50 Hz	1~, 230 V, 50 Hz	1~, 230 V, 50 Hz	3~, 400 V, 50 Hz
Protection category IP	20	20	20	20	20
Temperature operating range °C	-10 to +40	-10 to +40	-10 to +40	-20 to +40	-20 to +40
Installation temperature °C	+5 to +40	+5 to +40	+5 to +40	+5 to +40	+5 to +40
Weight approx. kg	200	202	202	202	204
Wiring diagram no.	1500	1500	1500	1500	1500

Dimensions KWL YOGA Style 700



■ **Heat exchanger frost protection**

The standard frost monitoring automatically regulates the supply air flow and the built-in electrical preheater, depending on the selected equipment.

■ **After-heater**

Unit variants with integrated post-heating (warm water or electrical after-heater) ensure the comfortable and energy-efficient post-heating of supply air. The target supply air temperature is set on the control element. The use of hydraulic unit type WHSH HE 24 V (0-10V), (accessories) is recommended for controlling the warm water heating element.

■ **Power control**

The included comfort control element with touch functionality and easy menu navigation provide the following functions:

- Demand-oriented ventilation, optionally with CO<sub>2</sub>, VOC, or humidity sensor (1 sensor can be connected).
- Initial commissioning (automatic determination of system characteristic curve).
- Fire alarm contact connection.
- Weekly or daily programme.
- Automatic bypass (summer operation: use of cool night air).
- Pressure monitoring of filter contamination.
- Displays required filter replacement.
- 5 password-protected function levels can be configured.
- Control via central building control system possible (ModBus RTU and ModBus TCP, BACnet)
- Including control line cable (10 m)

■ **Electrical connection**

After removing the left side panel, the connection box is easily accessible on the outside of the casing. The isolator/main switch is located on the outside of the unit for easy maintenance. It can be locked using a padlock to prevent unauthorised access.

■ **Sensors**

**Infrared motion sensor** for detecting the presence of people in the room.

**BWM** Ref. no. 08323

**CO<sub>2</sub> sensor** for measuring the CO<sub>2</sub> concentration.

**AIR1/KWL-VOC 0-10V** No. 20250

**VOC sensor** for measuring the mixed gas concentration (VOC).

**AIR1/KWL-CO2 0-10V** No. 20251

**Humidity-temperature sensor** for measuring the relative air humidity.

**AIR1/KWL-FTF 0-10V** No. 20252

**Control line cable**

**KWL-SL eC 5m** Ref. no. 40179

**KWL-SL eC 10m** Ref. no. 40180

Control line cables in 5 or 10 meters for sensors.

■ **Installation accessories**

**Flush-mounted/wall-mounted siphon**

**KWL-KS WE** Ref. no. 40064

**Ball-tube siphon**

**KWL-KS** Ref. no. 40065

**Condensate submersible pump**

**KWL-KP-I** Ref. no. 40472

**Hydraulic unit**

**WHSH HE 24V (0-10V)** No. 08318

**Facade grille, circular**

**FGR 315** Ref. no. 40182

■ **Filter, VDI-certified**

**Spare air filter (extract air)\***

ISO Coarse 60% (G4). Unit = 1 pc.

**ELF-KWL YOGA 700/VDI/Coarse 60%**

Ref. no. 40688

**Spare air filter (extract air)\***

ISO ePM<sub>10</sub> 60% (M5). Unit = 1 pc.

**ELF-KWL YOGA 700/VDI/ePM10 60%**

Ref. no. 40691

**Spare air filter (intake air)**

ISO ePM<sub>1</sub> 60% (F7). Unit = 1 pc.

**ELF-KWL YOGA 700/VDI/ePM1 60%**

Ref. no. 40694

\*2 extract air filters are required per unit.

**Attention:** For spare air filters of older unit generations (orders before March 2023): Please contact us at [export@heliosventilatoren.de](mailto:export@heliosventilatoren.de)

	With electrical preheater/ with warm water after-heater
	<b>KWL YOGA Style 700 EV/WW</b> Ref. no. 40030
	<b>KWL YOGA Style 700 EV/WW ET</b> Ref. no. 40678
	315
	340 - 870
	23 / 17
	28 / 22
	33 / 27
	35 / 29
	2350
	11.2
	1~, 230 V, 50 Hz
	20
	-20 to +40
	+5 to +40
	204
	1500

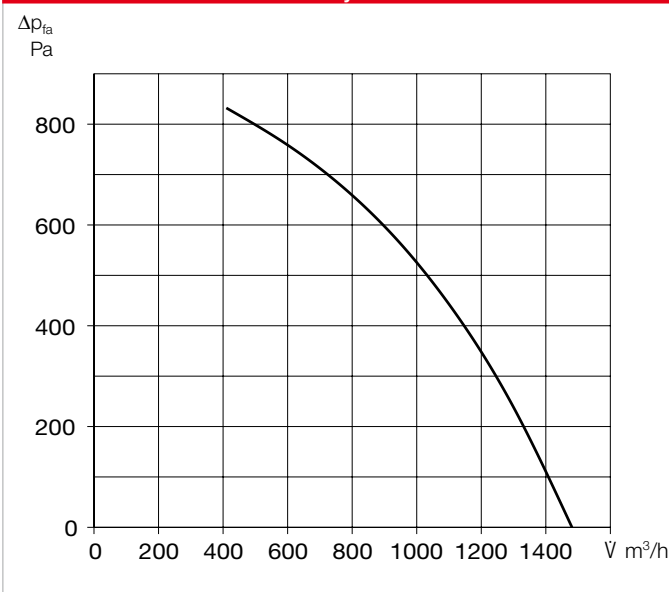
■ **Important note**

Further information on accessories can be found on page 66.

KWL YOGA Style 1000



Performance curve KWL YOGA Style 1000



Decentralised compact ventilation units with heat recovery for the supply and extract ventilation of individual rooms, such as classrooms, recreation rooms, offices, commercial units, medical practices and many more. Equipped with highly-efficient aluminium heat exchangers and energy-saving EC motors. Automatic shutters for intake and exhaust prevent cold draughts when the fans are deactivated. The flow-optimised supply air grille allows draught-free ventilation, even in large rooms, through the optimal use of the Coanda effect. Includes a touch control element for easy operation and configuration of unit functions.

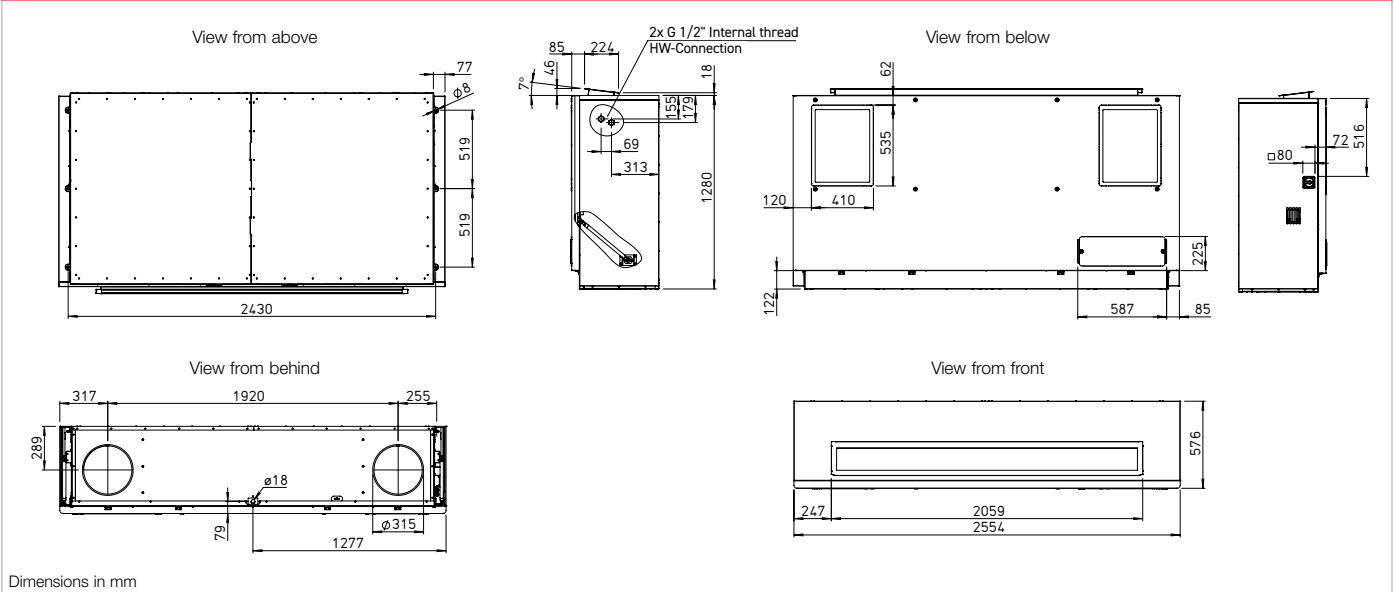
- Casing**  
Made of galvanised steel sheet, the casing parts are painted white/powder-coated. The double-walled unit casing is equipped with 40 mm thermal and sound insulation on all sides. Easy installation and maintenance due to large inspection panel.
- Installation**  
Ceiling installation is carried out using the vibration-damping fastening elements included in the scope of delivery.
- Heat exchanger**  
Large aluminium cross counterflow heat exchanger with up to 90 % heat recovery efficiency. Dismantling is possible in a few steps. Types "ET" are equipped with highly efficient enthalpy heat exchanger for additional humidity recovery of up to 50%.

- Fans**  
Two low-noise, high-performance EC fans with backward curved impellers for maximum energy efficiency.
- Sensor system**  
Integrated CO<sub>2</sub> sensor system. Alternatively, this can be replaced by an external sensor (VOC, CO<sub>2</sub> or humidity) positioned in the room. KWL Yoga can also be controlled with a motion sensor (combination not possible!) instead of the sensors.
- Air flow**  
Supply air on front side, two extract air openings on the underside of the unit. Intake and exhaust air connectors are equipped with spring-loaded shutters.

- Condensate connection**  
Condensate connection horizontal (wall side), optionally via ball siphon in surface-mounted or flush-mounted design or via condensate pump.
- Air filter, VDI-certified**  
Clean intake air flow via ISO ePM<sub>1</sub> 60 % filter (F7). Two filters for extract air: ISO Coarse 60 % (G4); optionally available: ISO ePM<sub>10</sub> 60 % (M5).
- Summer operation**  
Equipped with automatic bypass function (bypassing the heat exchanger to use the cool night air for controlling the room temperature) as standard.

	Without electrical preheater/ without electrical after-heater	Without electrical preheater/ with electrical after-heater	Without electrical preheater/ with warm water after-heater	With electrical preheater/ without after-heater	With electrical preheater/ with electrical after-heater
	<b>KWL YOGA Style 1000</b> Ref. no. 40032	<b>KWL YOGA Style 1000 EN</b> Ref. no. 40034	<b>KWL YOGA Style 1000 WW</b> Ref. no. 40036	<b>KWL YOGA Style 1000 EV</b> Ref. no. 40203	<b>KWL YOGA Style 1000 EV/EN</b> Ref. no. 40040
	<b>KWL YOGA Style 1000 ET</b> Ref. no. 40679	<b>KWL YOGA Style 1000 EN ET</b> Ref. no. 40680	<b>KWL YOGA Style 1000 WW ET</b> Ref. no. 40681	<b>KWL YOGA Style 1000 EV ET</b> Ref. no. 40682	<b>KWL YOGA Style 1000 EV/EN ET</b> Ref. no. 40683
Intake/exhaust air connector diameter	315	315	315	315	315
Air volume V m <sup>3</sup> /h (Min. - Max.)	410 - 1480	410 - 1480	410 - 1480	410 - 1480	410 - 1480
Radiation L <sub>p</sub> , dB(A) in 1 m / 3 m (at 0 Pa)					
- 410 m <sup>3</sup> /h	24 / 18	24 / 18	24 / 18	24 / 18	24 / 18
- 800 m <sup>3</sup> /h	30 / 24	30 / 24	30 / 24	30 / 24	30 / 24
- 1000 m <sup>3</sup> /h	34 / 28	34 / 28	34 / 28	34 / 28	34 / 28
- 1480 m <sup>3</sup> /h	42 / 36	42 / 36	42 / 36	42 / 36	42 / 36
Maximum power consumption total (incl. control) W	900	3900	900	2900	6900
Rated current total (incl. control) A	4.0	8.3	4.0	12.7	12.7
Voltage / frequency	1~, 230 V, 50 Hz	3~, 400 V, 50 Hz	1~, 230 V, 50 Hz	1~, 230 V, 50 Hz	3~, 400 V, 50 Hz
Protection category IP	20	20	20	20	20
Temperature operating range °C	-10 to +40	-10 to +40	-10 to +40	-17 to +40	-20 to +40
Installation temperature °C	+5 to +40	+5 to +40	+5 to +40	+5 to +40	+5 to +40
Weight approx. kg	267	270	270	270	273
Wiring diagram no.	1500	1500	1500	1500	1500

**Dimensions WL YOGA Style 1000**



Dimensions in mm

**Heat exchanger frost protection**

The standard frost monitoring automatically regulates the supply air flow and the built-in electrical preheater, depending on the selected equipment.

**After-heater**

Unit variants with integrated post-heating (warm water or electrical after-heater) ensure the comfortable and energy-efficient post-heating of supply air. The target supply air temperature is set on the control element. The use of hydraulic unit type WSH HE 24 V (0-10V), (accessories) is recommended for controlling the warm water heating element.

**Power control**

The included comfort control element with touch functionality and easy menu navigation provide the following functions:

- Demand-oriented ventilation, optionally with CO<sub>2</sub>, VOC, or humidity sensor (1 sensor can be connected).
- Initial commissioning (automatic determination of system characteristic curve).
- Fire alarm contact connection.
- Weekly or daily programme.
- Automatic bypass (summer operation: use of cool night air).
- Pressure monitoring of filter contamination.
- Displays required filter replacement.
- 5 password-protected function levels can be configured.
- Control via central building control system possible (ModBus RTU and ModBus TCP, BACnet)
- Including control line cable (10 m)

**Electrical connection**

After removing the left side panel, the connection box is easily accessible on the outside of the casing. The isolator/main switch is located on the outside of the unit for easy maintenance. It can be locked using a padlock to prevent unauthorised access.

**Sensors**

**Infrared motion sensor** for detecting the presence of people in the room.

**BWM** Ref. no. 08323

**CO<sub>2</sub> sensor** for measuring the CO<sub>2</sub> concentration.

**AIR1/KWL-VOC 0-10V** No. 20250

**VOC sensor** for measuring the mixed gas concentration (VOC).

**AIR1/KWL-CO2 0-10V** No. 20251

**Humidity-temperature sensor** for measuring the relative air humidity.

**AIR1/KWL-FTF 0-10V** No. 20252

**Control line cable**

**KWL-SL eC 5m** Ref. no. 40179

**KWL-SL eC 10m** Ref. no. 40180

Control line cables in 5 or 10 meters for sensors.

**Installation accessories**

**Flush-mounted/wall-mounted siphon**

**KWL-KS WE** Ref. no. 40064

**Ball-tube siphon**

**KWL-KS** Ref. no. 40065

**Condensate submersible pump**

**KWL-KP-I** Ref. no. 40472

**Hydraulic unit**

**WSH HE 24V (0-10V)** No. 08318

**Facade grille, circular**

**FGR 315** Ref. no. 40182

**Filter, VDI-certified**

**Spare air filter (extract air)\***

ISO Coarse 60% (G4). Unit = 1 pc.  
**ELF-KWL YOGA 1000/VDI/Coarse 60%**  
Ref. no. 40689

**Spare air filter (extract air)\***

ISO ePM<sub>10</sub> 60% (M5). Unit = 1 pc.  
**ELF-KWL YOGA 1000/VDI/ePM10 60%**  
Ref. no. 40692

**Spare air filter (intake air)**

ISO ePM<sub>1</sub> 60% (F7). Unit = 1 pc.  
**ELF-KWL YOGA 1000/VDI/ePM1 60%**  
Ref. no. 40695

\*2 extract air filters are required per unit.

**Attention:** For spare air filters of older unit generations (orders before March 2023): Please contact us at [export@heliosventilatoren.de](mailto:export@heliosventilatoren.de)

	With electrical preheater/ with warm water after-heater
	<b>KWL YOGA Style 1000 EV/WW</b> Ref. no. 40205
	<b>KWL YOGA Style 1000 EV/WW ET</b> Ref. no. 40684
	315
	410 - 1480
	24 / 18
	30 / 24
	34 / 28
	42 / 36
	2900
	12.7
	1~, 230 V, 50 Hz
	20
	-17 to +40
	+5 to +40
	273
	1500

**Important note**

Further information on accessories can be found on page 66.



**KWL-KS WE**



■ **Flush-mounted/wall-mounted siphon**

Flush-mounted condensate siphon for ventilation units, for odourless discharge of condensate in the sewage system. Desiccation-safe and cleanable by removing siphon cartridge. Incl. plug-in seal (rubber) for  $\varnothing$  20 – 32 mm. Vertical outlet connector DN32. Structural protection can be cut to installation depth. Incl. odour barrier, pursuant to EN 681, DIN 19541.

Technical data	KWL-KS WE Ref. no. 40064
Material	Polypropylene (PP) and ABS
Drainage capacity l/s	0.15
Min. - max. duct length (feed) in m	0.2 – 3.5
Minimum installation depth in mm	60
Condensate line connection	External $\varnothing$ 20 – 32 mm / Internal $\varnothing$ 18 mm
Dimensions (L x W x H) in mm	110 x 110 x 60
Weight approx. kg	0.25

**KWL-KS**



■ **Ball-tube siphon**

Ball-tube siphon for ventilation units, for odourless discharge of condensate in the sewage system. Desiccation-safe. Incl. plug-in seal (rubber) for  $\varnothing$  9 – 29 mm. Horizontal outlet connector DN40.

Technical data	KWL-KS Ref. no. 40065
Material	Polypropylene (PP)
Drainage capacity l/s	0.6
Drain connection	DN40

**KWL-KP-I**



■ **Condensate submersible pump**

Condensate pump for unit-integrated use in ventilation units, if the condensate connection with a downward slope to a waste water pipe is not possible. The submersible pump is placed directly in the condensate pan. The maximum flow rate is 12 l/h at 0 m delivery height. 9 l/h at 5 m delivery head. Protection class: IP68. Incl. alarm circuit.

<b>KWL-KP-I</b>	Ref. no. 40472
-----------------	----------------

**WHSH HE 24 V (0-10V)**



■ **Hydraulic unit**

Controls the water temperature of the PWW heater element by means of three point valve actuator 24 V (0-10 V) and thus the thermal output which is conveyed to the air. Delivered as complete unit, incl. flow/return temperature display, circulation pump and flexible connecting pipes.

<b>WHSH HE 24V (0-10V)</b>	Ref. no. 08318
----------------------------	----------------

**AIR1/KWL-VOC 0-10V / -CO<sub>2</sub> 0-10V / -FTF 0-10V**



■ **Room sensor**

For measuring the CO<sub>2</sub>, mixed gas (VOC) concentration or relative humidity. Dim. mm (W x H x D) 85 x 85 x 27

**VOC sensor** for measuring the mixed gas concentration (VOC).

**AIR1/KWL-VOC 0-10V** Ref. no. 20250

**CO<sub>2</sub> sensor** for measuring the CO<sub>2</sub> concentration.

**AIR1/KWL-CO<sub>2</sub> 0-10V** Ref. no. 20251

**Humidity-temperature sensor** for measuring the relative air humidity.

**AIR1/KWL-FTF 0-10V** Ref. no. 20252

**BWM**



■ **Infrared motion sensor**

Motion sensor for detecting the presence of people in the room. Wall installation (surface mounted) (cable entry at top or bottom) or installation in flush-mounted box Ø 55 mm (cable entry at back).

Technical data	BWM Ref. no. 08323
Material casing	ABS plastic, white (similar RAL 9010)
Protection class	III
Protection category	IP30
Electrical connection	0.14 – 1.5 mm <sup>2</sup> (screw terminals)
Dimensions in mm (W x H x D)	85 x 85 x 27

**FGR**



■ **Facade grille, circular**

For flush covering of ventilation openings on the facade. Can be used for circular outdoor and exhaust air ducts. Two holes in the pipe spigot allow secure fastening with screws, to be provided by customer.

Solid aluminium construction. Fixed blades with stainless steel wire mesh behind, mesh size 10 x 10 mm.

**FGR 250** Ref. no. 40181

**FGR 315** Ref. no. 40182

**ELF-KWL YOGA**



■ **Filter, VDI-certified**

**Spare air filter (extract air)\*** ISO Coarse 60% (G4). Unit = 1 pc.

**ELF-KWL YOGA 400/VDI/Coarse 60%** Ref. no. 40687

**ELF-KWL YOGA 700/VDI/Coarse 60%** Ref. no. 40688

**ELF-KWL YOGA 1000/VDI/Coarse 60%** Ref. no. 40689

**Spare air filter (extract air)\*** ISO ePM<sub>10</sub> 60% (M5). Unit = 1 pc.

**ELF-KWL YOGA 400/VDI/ePM10 60%** Ref. no. 40690

**ELF-KWL YOGA 700/VDI/ePM10 60%** Ref. no. 40691

**ELF-KWL YOGA 1000/VDI/ePM10 60%** Ref. no. 40692

**Spare air filter (intake air)** ISO ePM<sub>1</sub> 60% (F7). Unit = 1 pc.

**ELF-KWL YOGA 400/VDI/ePM1 60%** Ref. no. 40693

**ELF-KWL YOGA 700/VDI/ePM1 60%** Ref. no. 40694

**ELF-KWL YOGA 1000/VDI/ePM1 60%** Ref. no. 40695

\* 2 extract air filters are required per unit.

**Attention:** For spare air filters of older unit generations (orders before March 2023): Please contact us at [export@heliosventilatoren.de](mailto:export@heliosventilatoren.de)